



# ANNUAL REPORT

EMPOWERING ARTISTS  
OF ALL AGES & ABILITIES

JULY 1, 2023 - JUNE 30, 2024



**NEMPAC**

North End Music &  
Performing Arts Center



## OUR MISSION

NEMPAC's mission is to enrich lives through exceptional, accessible music education and performing arts programs that embrace our vibrant, inclusive, and diverse communities.

**NEMPAC**  
North End Music & Performing Arts Center

## OUR VISION

NEMPAC envisions dynamic Boston neighborhoods where music and performing arts fill the city with creativity, spark connections, and inspire us to be our best selves.

## OUR IMPACT AT A GLANCE

**1,450 +**

*students served  
per week*

**2**

**85**

*professional artists  
hired for performances*

**26%**

*of our audiences utilized  
the pay-what-you-can  
ticket model*





## TABLE OF CONTENTS

2 -	Mission & Vision
4 -	Our Core Values & Land Acknowledgement
5 -	Message from our Board President
7 -	Reflection from our Executive Director
8 -	Celebrating Pride
9 -	Advancing Equity
10 -	Commitment to Accessibility
12 -	Open Mic Nights
14 -	Enhancing Quality of Life through Art
15 -	Volunteerism
16 -	Community Music School
19 -	Elevating Diverse Artists and Their Voices
22 -	Treasurer's Report
23 -	Statement of Financial Position
24 -	Summary of Activity
26 -	Annual Giving
30 -	In-Kind Gift Fund
31 -	Professional Relations, Collaborations, and Partners
32 -	Facilities
33 -	Board of Directors and Staff
34 -	Faculty
35 -	NEMPAC Soirée Annual Fundraiser



# OUR CORE VALUES

Positioned at the intersection of arts education and performance, we empower artists of all ages and abilities, and in doing so, strengthen our neighborhoods into unified communities.



## LAND ACKNOWLEDGMENT STATEMENT

*NEMPAC is thankful to bring public arts programs to local parks, schools, community centers, and neighborhoods in Boston that have deeply spirited roots and traditions.*

NEMPAC acknowledges that the land our non-profit resides on is the ancestral homeland of the Pawtucket and Massachusetts tribal nations. We honor these communities and the elders of these nations – past, present, and future – whose practices and spiritualities are tied to the land.

We recognize the enduring relationships between Indigenous communities and the traditional territories that our buildings occupy. As an arts and educational non-profit, we believe there is an obligation to accurately and responsibly acknowledge the unceded land our institution is built upon. We recognize that American Indian, Native American, Indigenous, First Peoples, First Nations, and Aboriginal communities are present and alive today, and are not mere relics of history.



# MESSAGE FROM OUR BOARD PRESIDENT

**Dear NEMPAC Community,**

Thank you all for your ongoing support for NEMPAC. Together, we have created opportunities for thousands to participate in community arts.

Following unprecedented growth in 2021 with the expansion into our headquarters at Tileston Street we created our 2023-26 Strategic Plan with a focus on maintaining our high-quality programs, while ensuring equitable opportunities for all. As we conclude the second year of this three-year plan, I am proud to report that NEMPAC has made great strides in meeting these goals.

NEMPAC continued its work to become an organization serving all, regardless of race, class, financial status, and other barriers that have historically excluded communities from participating in the arts. We worked with Art and Soul Consulting to establish our DEIB (Diversity, Equity, Inclusion, and Belonging) goals and renewed commitment to equity and access.

Throughout the year, we made a commitment to new programming for seniors in the North End neighborhood - and deepened our existing programs and partnerships. Our Performing Arts Center celebrated another successful year of programming - and we culminated a wonderful ten years of our Winter Concert Series, expertly led by Artistic Director Christina Wright-Ivanova.

In addition to welcoming new board members, Clarinda Massengill and Marly I. Roche Pabon, we paid tribute to our former DEIB Committee Chairman and Board Treasurer, Robin Wehbe, after he completed his tenure on our Board of Directors. We thank him for his endless contributions that led to another successful year.

My heartfelt gratitude goes to the members of the Board of Directors for their unwavering commitment and service. Their dedication to our mission and the countless hours they volunteer make a profound impact on our organization and the communities we serve.

To that end, I express my appreciation to all of our donors, volunteers, sponsors, staff, and faculty who supported NEMPAC this past year. Everything we do is only possible because of your support and belief in our NEMPAC mission.

Looking ahead, we will build upon the steps we have taken in 2023-2024, and keep our vision on finding a permanent 'home' for the NEMPAC organization - along with the City of Boston community and beyond - to enrich our lives with exceptional, transformative arts. Thank you for believing in NEMPAC, and for sharing in the joy of music and performing arts.

**Mary O'Neill**

North End Music & Performing Arts | Board Chair





 **NEMPAC**  
North End Music &  
Performing Arts Center

*empowering artists  
of all ages  
and abilities*



# REFLECTION FROM OUR EXECUTIVE DIRECTOR

**Dear Friends,**

As we reflect on the past year, I am filled with gratitude and pride for what we have accomplished together at our community music school and performing arts center. Your unwavering support has been the cornerstone of our mission, allowing us to foster creativity and inclusivity, and thereby enrich lives through the arts.

Together, we deepened collaborations with our partners, especially within Boston Public Schools and EdVestors. We increased tuition assistance and scholarship awards this year by 60%, supporting 45 total awards, and funded free or discounted tuition to 636 students. We hired 53 teens as part of our youth internship program in partnership with the City of Boston. Our classes, workshops, and performances have contributed to the vibrant tapestry of talent and community spirit.

In Year Two of our NEMPAC Strategic Plan, we made major progress in areas of equity, program development, and accessibility. Some of these key achievements included:

- Increasing adult and senior program engagement through new instrumental adult classes, including outreach workshops with the **Nazzaro Community Center** and **NEW Health**
- Expanding programming at **Charlestown Working Theater** utilizing all studio and performance space
- Participating in the **Massachusetts Cultural Council Card to Culture** program
- Implementing a 'Pay-What-You-Can' ticketing model
- Becoming an approved vendor of the nation-wide **Art Pharmacy**, a healthcare program through which providers prescribe arts to those in need
- Creating and adopting an organizational **Anti-Racism Policy and Action Plan**

Our performances have been a highlight, showcasing the incredible stories and talents of artists. Events like our *Jazz in the Park Summer Concert Series*, NEMPAC Opera Project's *Orfeo ed Euridice*, Faculty Artist Concerts, and community Open Mic Nights brought together diverse audiences, proving once again that the arts have a unique power to unite us.

We remain committed to our vision of a true Performing Arts Center building, creating a future home that can centralize our programming in the North End, and support our continued need for creative, inclusive, and artistic space.

Thank you for believing in NEMPAC. Together, we will continue to build unity within our communities, and inspire and uplift each other through music and the performing arts.

**Sherri Snow**

North End Music & Performing Arts Center | Executive Director



# CELEBRATING PRIDE

With the massive increase in anti-LGBTQIA+ legislation across the country, **NEMPAC stepped up to support the LGBTQIA+ Community** with advocacy work, including marching in the Boston Pride for the People Parade for the first time, and participating in the 3rd Annual North End Pride flag-raising. We partnered with elected officials, the Mayor's Office of LGBTQ+ Advancement, Boston Festival Orchestra, and the Boston Opera Alliance.





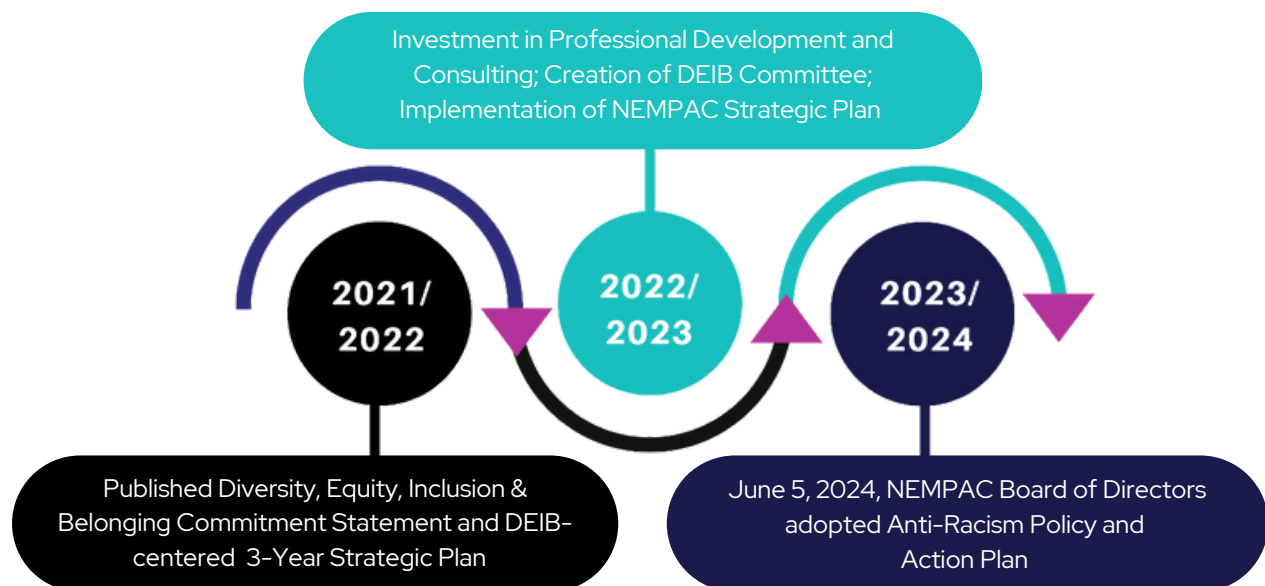
# ADVANCEMENT OF EQUITY

## A FOCUS ON ANTI-RACISM

Beginning with the creation of our DEIB (Diversity, Equity, Inclusion, and Belonging) Committee in 2021, we are proud to focus on advancing Racial Equity. On June 5, 2024, the NEMPAC Board of Directors adopted an Anti-Racism Policy and Action Plan. Our path to adopting this plan began with a focus on these key areas:

- Creating an anti-racist organization that encourages continuous racial justice education
- Increasing racial diversity at the Leadership Level that reflects the communities we serve across the City of Boston and local neighborhoods
- Implementing marketing strategies promoting activities that welcome new and diverse community members
- Tracking and capturing our progress as an anti-racist organization
- Establishing a friendly work atmosphere and culture where people are valued equally
- Developing closer partnerships to improve programming and reach underprivileged areas and prospective students
- Creating and presenting professional performances that highlight diverse cultures, genres, and artists, bringing different people together for a shared creative experience
- Establishing a hiring team that advances equity and uses resources to ensure opportunities are fair and accessible to job-seekers

## OUR PROGRESS



### KEY METRICS IN 23/24

- **27%** of program revenue allocated back into tuition assistance, free programs, and scholarships
- **61%** increase in students receiving Tuition Assistance from prior year 2022/23
- **46%** BIPOC representation on at the Board of Directors, further reflecting the racial diversity of the communities and the teaching and performing artists we hire/present





## COMMITMENT TO ACCESSIBILITY

### TUITION ASSISTANCE

#### CARD TO CULTURE

We are proud to participate in **Massachusetts Cultural Council's Card to Culture Program** in collaboration with the Department of Transitional Assistance, the Department of Public Health's WIC (Women, Infants, and Children) Nutrition Program, the Massachusetts Health Connector, and hundreds of organizations, by making cultural programming accessible to those for whom cost is a participation barrier.

Massachusetts residents who are EBT cardholders and their families automatically qualify for partial tuition assistance for our classes, workshops, and summer workshop programs. Students with an EBT card will typically receive a minimum 50% discount on one class or Private Music Instruction session, with larger awards available based on applicant need and the NEMPAC budget.





## GERALDINE MARSHALL SCHOLARSHIP FUND & CORNHOLE TOURNAMENT

NEMPAC welcomed over 500 community members, supporters, and cornhole enthusiasts to the Rose Kennedy Greenway on Sunday, June 2nd for our annual Cornhole Classic benefiting NEMPAC and the Marshall Scholarship Fund.

The Geraldine Marshall Scholarship Fund was founded in 2014 by Geraldine's son, State Representative Aaron Michlewitz, to preserve the legacy of a woman who loved children and the arts. The fund provides youth scholarships to North End residents under the age of 18. This fund is supported by hundreds of local individuals, businesses, and elected officials each year who attend the annual Cornhole Classic in the Rose Kennedy Greenway and the annual Bocce Tournament in Langone Park. In 2023-24, NEMPAC raised a total of \$74,971 from sponsors, auction winners, and participants. Thank you community supporters!





# OPEN MIC NIGHTS

NEMPAC's Open Mic Nights continued, expanded, and thrived in their new home at the Boston Public Market. This public space has fostered a larger community of performers and audience members, allowing us to provide a stage for more of Boston's talented musicians.

Open Mic Nights:

- Are free events held monthly for adults
- Feature 12-15 performers each month
- Are attended by 60-75 audiences members on average
- Attract musicians from many neighborhoods in the City of Boston and beyond
- Create a sense of belonging in a creative and intimate "home" where all are welcome

Thank you to the Boston Public Market for partnering with NEMPAC to bring accessible music opportunities to our community! A special thank you to Barry Marshall for generously underwriting our Open Mic Night program.



*"NEMPAC's Open Mic Nights have been a wonderful opportunity to grow my skills as a musician and a performer and to learn from other local musicians. I love the warm atmosphere, the range of artists and styles, and the supportive environment. It's the perfect opportunity to try out songs, and to hear new material from others in our community."*

**-Z**

*(singer-songwriter and regular performer)*



# NEMPAC

North End Music &  
Performing Arts Center

NEMPAC CELEBRATES THE GENEROSITY OF  
THE FOLLOWING DONORS WHOSE CONTRIBUTIONS TO THE  
"NEXT ACT" CAMPAIGN

MUSIC IS  
UNIVERSAL



# ENHANCING QUALITY OF LIFE THROUGH MUSIC



## PASTA MAKING & MUSIC CLASSES

In partnership with Seven Hills Pasta, we offered a culturally-themed Pasta Making Class for youth with live music accompaniment! Participants worked with a professional chef to make pasta while listening to some of NEMPAC's finest artists, all the while building a new skill in the kitchen in a fun social environment with friends and neighbors from the community. Following the success of this class, we are expanding this program to include adults and seniors.

## ART PHARMACY

NEMPAC is a proud partner organization of the newly launched Art Pharmacy program in Massachusetts, which refers patients to arts organizations for services that are free of cost. Participation in Art Pharmacy addresses barriers to treatment and aligns with our belief that the arts are essential to our wellbeing.

## NAZZARO CENTER SENIORS

As part of our commitment to enhancing quality of life for senior citizens, representatives from the NEMPAC Education Team met with Nazzaro Center members to assess their interests and needs for arts enrichment. Over \$3,000 in funds raised for Giving Tuesday in 2023 were allocated to developing programs launching in the new fiscal year. NEMPAC staffing dedicated time to collect feedback from seniors on what artistic programs they were interested in participating in, which informed our 2024-25 program plans to pilot Instrument Classes, Music History Workshops, and Musical Bingo.



# VOLUNTEERISM

Our Band of Volunteers are an integral part of our NEMPAC family and enrich our programming with their unwavering dedication. This past year, our volunteers supported our Soirée, Pumpkin Painting, 50/50 Celtics raffle, Performathon, Cornhole, MT Troupe productions, and general office duties. We thank them for their generous support!





# COMMUNITY MUSIC SCHOOL

NEMPAC's community music school nurtured rising artists in families through in-house educational offerings, private and group music instruction, and arts programming at area schools.

**6**

Partnerships with area schools to bridge the arts education gap among youth

**51**

Faculty members teaching a wide array of arts disciplines

**61%**

Increase in students receiving tuition assistance from prior year 2022/23

## IN-HOUSE EDUCATIONAL OFFERINGS

NEMPAC offered on-site classes and programs in musical theatre, dance & movement, music technology, group instrument, music ensembles, and teen internships at our campus in the North End along with three instruction sites in Charlestown. With classes for students ages 6 months to adult, students of all ages and abilities can find offerings that fit their interests and needs, while further developing their performance skills. Some key classes, programs, and special projects included:

- Fall and Spring Musicals of *Rudolph the Red Nosed Reindeer* (in partnership with CWT) and *Oliver! Jr*
- Kids Vocal Discovery
- Make a Beat Music Producing
- Hip-Hop Dance
- Adult Keyboard and Ukulele

## YOUTH MUSIC COMPETITION & DEEPENED LEARNING

NEMPAC 2024 Youth Music Competition winners Teddy Childs and Alexander Manning were awarded 1st place in their divisions. Other student engagement events included a Teen Open Mic Night, Musicians Appreciation Week, and Holiday Special Events like the Trellis Lighting, Faneuil Hall Tree Lighting, and the Mayor's Trolley Tour.

**53**

Teen interns hired in grades 7 - 12 as teaching assistants in classes

**361**

Students participating in after-school programs in Music, Musical Theatre, and Dance

**636**

Youth students in grades K - 8 receiving free or discounted tuition



## PRIVATE MUSIC & GROUP INSTRUCTION

Faculty members at NEMPAC's Community Music School nurtured our students through private and group instruction in the instruments below.

- Banjo
- Bass Guitar
- Drums
- Flute
- Glockenpsiel
- Guitar
- Piano
- Trumpet
- Ukulele
- Violin
- Voice

## PERFORMATHON

Our students collected pledges for their performances at the Annual NEMPAC Performathon, helping to fund tuition assistance and educational programs. We raised \$27,752 in 2024, with hundreds of community members and local businesses supporting pledges, raffle donations, and sponsorships. The 2024 Performathon was sponsored by Seven Hills Pasta Co., Rita Pagliuca, Andrea Waldstein, Chairman of House of Ways & Means and State Representative Aaron Michlewitz, Knights of Columbus, and North End Athletic Association.

## SCHOOL PARTNERSHIPS

NEMPAC continued to partner with the following schools to bridge the arts education gap among youth. Our programming had a diverse range of opportunities for students to choose from, including after-school private instrument lessons, a free after-school dance troupe, in-school theatre and music technology classes, an after-school band program, and an in-school strings ensemble.

### 1 • Eliot K-8 BPS Innovation School

- Lower School
- Intermediate School
- Upper School

### 2 • Good Shepherd School

### 3 • Warren Prescott BPS K-8 School

### 4 • Harvard-Kent BPS Elementary School

### 5 • Mario Umana Academy

### 6 • St. John School







## STUDENT RECITALS

NEMPAC presents two student recitals per year, with one in the Winter (January), and one in the Summer (June). All of our faculty studios are represented at each recital, with approximately 120 students participating in both the Winter and Spring. This is a great opportunity for students to share their hard work with family, friends, and fellow students. Our venues include North Bennet Street School and Charlestown Working Theater.



# PERFORMING ARTS CENTER

## ELEVATING ARTISTS & THEIR VOICES

NEMPAC's 14th Season of professionally presented concerts and performance projects saw us approach our audiences and artists in a whole new way.

## PAY-WHAT-YOU-CAN TICKET MODEL

Supporting our commitment to equity, NEMPAC implemented a pay-what-you-can ticketing model, welcoming audience members to pay the amount that is most comfortable for them. This model allows us to eliminate the cost barrier to attending performances that so many audience members experience.



## JAZZ IN THE PARK | SUMMER CONCERT SERIES

*Artistically Directed by: Stefano Marchese*

Proudly partnering with the City of Boston and the Rose Kennedy Greenway Conservancy, and sponsored by Canopy by Hilton, Rose Town Kitchen & Bar, Eastern Bank, The Lupoli Family Foundation, North Street Grille, Munroe Morrow Wealth Management, and Boston Public Market, NEMPAC presented five free public concerts, with thousands gathered to witness Boston's top jazz and contemporary musicians. The series featured the following artists from all over the world:

July 13th: **Gaby Cotter & The Timba Messengers (Panama)**

July 20th: **Ciara Moser (Austria/Ireland)**

July 27th: **Nadia Washington (Texas)**

August 3rd: **Niu Raza (Madagascar)**

August 10th: **Cettina Donato (Italy)**



## NEMPAC OPERA PROJECT

*Artistic Director and Stage Director: Brenda Huggins, Artistic Associate Leo Balkovetz*

The Amore Concert at City Winery in February featured a diverse array of singers and repertoire, reflecting the range of emotion and human experience as it relates to romantic love. There was even an interactive game component to the evening!

On June 13th and 14th we presented a Queer interpretation of *Orfeo ed Euridice* at the Dante Alighieri Society of Massachusetts in Cambridge. This marked a continued collaboration with Boston Festival Orchestra and the Nightingale Vocal Ensemble, stage directed by Brenda Huggins and conducted by Boston Festival Orchestra's Music Director, Alyssa Wang. This was our first time incorporating the pay-what-you-can model, which greatly increased the diversity of our audience, especially with a younger and queerer demographic attending.

As part of our outreach and engagement plan for *Orfeo ed Euridice* we hosted a concert and talk-back at both the North End Library and at Brookline Sounds of Summer.

A special thank you to our NEMPAC Opera Project Sponsors: Rich Vita Law Offices, Eastern Bank, the Mass Cultural Council, The COOP at Harvard/MIT, and The Lupoli Family Foundation.



## OPERA ON THE PRADO

We presented Opera on the Prado in summer 2023 with the support of program sponsor Ristorante Lucia. Opera filled the streets of the North End at these free events, with several of NEMPAC's most distinguished artists performing, including: Aurora Martin (soprano), Leo Balkovetz (tenor), Kelley Hollis (soprano), and Chihiro Asano (mezzo-soprano).



## CONCERT SERIES

NEMPAC presented an array of concerts representing diverse cultures, genres, and instruments including:

- **The Guitar's Hispanic Heritage: An Evening of Spanish and Latin-American Music**, a concert featuring NEMPAC guitar faculty, Fred Springer, with an eclectic assortment of music derived from Hispanic cultures. Spanning from the Renaissance to present day, the program highlighted music from Spain, Argentina, Brazil, Mexico, and New Mexico.
- **Distortion: Music for Violin and Electronics**, a concert featuring NEMPAC faculty member and violinist, Brooks Berg, exploring the genre of electroacoustic music and showcasing the expressive range of the violin, enhanced by a wide variety of sounds and effects. The compositions presented were written solely by female composers, and referenced musical styles from Baroque to Folk.



## THE FINALE OF THE WINTER CONCERT SERIES & NEW ARTIST SERIES REQUEST FOR PROPOSAL

Celebrating 10 years at the helm of our Concert Series, Christina Wright-Ivanova gave her final performance as Artist Director with a private concert with Aaron Zelkowicz. The next phase of our Performing Arts Center concerts—inspired by Christina's brilliant work—looks to include many genres of music from Jazz, to Pop, to Folk, to Classical, with programming curated by diverse artists across Greater Boston. To achieve this, we put out an RFP (Request for Proposal) for a newly minted Artist Series in Summer 2024.



# TREASURER'S REPORT

**Dear Community,**

In the past six years NEMPAC's operating budget has more than doubled. Alongside this growth we have matured our financial practices and projections, positioning NEMPAC for continued success and growth.

During the 2023-24 fiscal year we:

- Increased tuition assistance 33% over the previous year
- Leveraged the organization's operating reserves to earn dollars put towards programming
- Finished the fiscal year within 3% of our approved expense budget

In the interest of transparency, this year's audit uncovered a prior year adjustment affecting deferred revenue bookkeeping in the 2022-2023 fiscal year. The appropriate adjustments have been made in both our financial records and reporting, as well as in our processes.

Community engagement continues to drive NEMPAC's growth through music education, support for local performing artists, and events reinforcing local connections. The Fall Soirée, our signature annual fundraiser, remains a joyful way to kick off our annual programming and highlight support from local businesses and politicians. We are thankful for the generous financial and in-kind support from our local businesses. We are also thankful for the \$100,000 Massachusetts Ways and Means Committee grant received in fiscal year 2024.

Thank you for your continued support of NEMPAC and our mission!

**Caroline Twomey Lamb**

North End Music & Performing Arts Center | Board Treasurer



# STATEMENT OF FINANCIAL POSITION

July 1, 2023 - June 30, 2024

## STATEMENT OF FINANCIAL POSITION

July 1, 2023 - June 30, 2024

	June 30, 2024	June 30, 2023
<b>ASSETS</b>		
Cash and cash equivalents	\$ 931,342.00	\$ 882,695.00
Account Receivable	\$ 101,216.00	\$ 1,650.00
Other Assets	\$ 54,223.00	\$ 49,550.00
Prepaid expenses	\$ 7,059.00	-
Property and Equipment, Net	\$ 422,432.00	\$ 464,905.00
<b>Total Assets</b>	<b>\$ 1,516,272.00</b>	<b>\$ 1,398,800.00</b>
<b>LIABILITIES</b>		
Accounts Payable	\$ 7,054.00	\$ 62,926.00
Deferred Revenue	\$ 163,588.00	\$ 105,960.00
Accrued Expenses	\$ 26,665.00	\$ 18,462.00
<b>Total Liabilities</b>	<b>\$ 197,307.00</b>	<b>\$ 187,348.00</b>
<b>NET ASSETS</b>		
Without donor restrictions	\$ 781,778.00	\$ 763,599.00
With donor restrictions	\$ 537,187.00	\$ 447,853.00
<b>Total Net Assets</b>	<b>\$ 1,318,965.00</b>	<b>\$ 1,211,452.00</b>
<b>Total Liabilities and Net Assets</b>	<b>\$ 1,516,272.00</b>	<b>\$ 1,398,800.00</b>

### Key Financial Observations:

- Clean audit opinion in FY23-24 and throughout NEMPAC's history
- 8% growth of assets & net assets
- 15% increase in program revenue (children's courses & music instruction)
- Contributions/grants grew 23% despite reduction in fundraising expenses
- Increase in liquidity



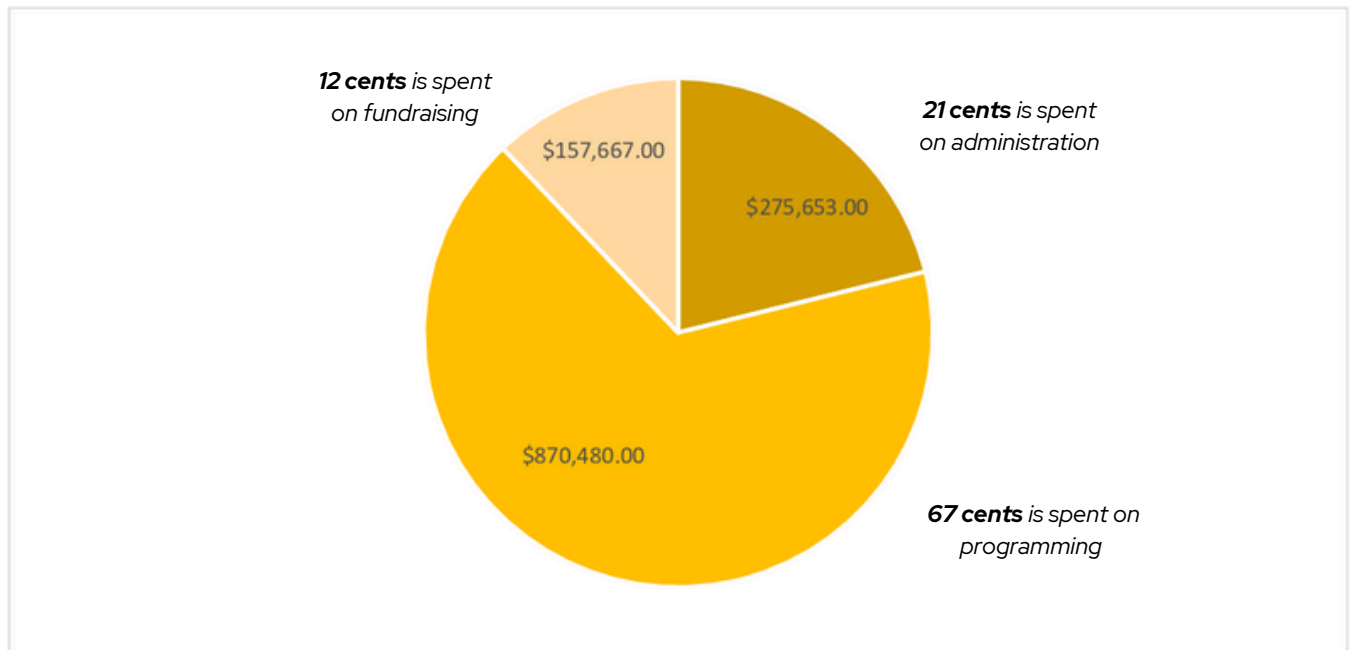
# SUMMARY OF ACTIVITY

July 1, 2023 - June 30, 2024

		FY 20-21	FY 21-22	FY 22-23	FY 23-24
REVENUE	Programming	\$ 442,366.00	\$ 690,579.00	\$ 729,965.00	\$ 846,609.00
	Fundraising: Annual Fund	\$ 302,579.00	\$ 543,694.00	\$ 461,586.00	\$ 563,704.00
	Fundraising: Capital Fund	\$ 426,810.00	\$ 334,200.00	\$ 6,150.00	\$ 1,000.00
	<b>TOTAL INCOME</b>	<b>\$ 1,171,755.00</b>	<b>\$ 1,568,473.00</b>	<b>\$ 1,197,701.00</b>	<b>\$ 1,411,313.00</b>
EXPENSES	Operating	\$ 248,689.00	\$ 164,535.00	\$ 240,475.00	\$ 275,653.00
	Program	\$ 449,426.00	\$ 702,336.00	\$ 776,842.00	\$ 870,480.00
	Fundrasing & Capital Project	\$ 521,805.00	\$ 256,792.00	\$ 196,090.00	\$ 157,667.00
	<b>TOTAL EXPENSES</b>	<b>\$ 1,219,920.00</b>	<b>\$ 1,123,663.00</b>	<b>\$ 1,213,407.00</b>	<b>\$ 1,303,800.00</b>
<b>NET</b>		<b>\$ (48,165.00)</b>	<b>\$ 444,810.00</b>	<b>\$ (15,706.00)</b>	<b>\$ 107,513.00</b>

## ALLOCATION OF EXPENSES

For every dollar donated to NEMPAC...





*"The most special part of this production [Orfeo ed Euridice] was the queer representation of love, in the context of a traditionally heteronormative opera. I think representation is so important in media and artistic spaces, so I am so grateful to have the opportunity to work with a production team that shared the same values as me. Love is love and I really think we captured that in this opera "*

**-MARY KRAY, ORFEO IN ORFEO ED EURIDICE**



*Mary Kray (Orfeo) pictured left  
with Madeleine Lew (Eurydice) right*



# ANNUAL GIVING

This donor list reflects all donors who gave to NEMPAC during the fiscal year July 1, 2023 to June 30, 2024. Donations supported NEMPAC's Annual Fund as well as several restricted funds including the Capital Fund and Geraldine Marshall Scholarship Fund.

## **Benefactor \$25,000+**

City of Boston Department of Neighborhood Development -  
Commonwealth of Massachusetts - Lupoli Family Fund of Essex County Community Foundation -  
Trustees of the George Robert White Fund

## **Champion \$10,000 - \$24,999**

Anonymous - Ramin Khoshatefeh & Daena Vida and enLabel Corporation -  
Liberty Mutual Foundation - Seven Hills Pasta

## **Producer \$5,000 - \$9,999**

Barry and Brenda Winston Charitable Fund - Canopy Boston Downtown - Eastern Bank -  
EdVestors BPS Arts Expansion - Greater Tacoma Community Foundation -  
Mill River Foundation Fund - Nolan & Jenelle Previte - Andrea Waldstein

## **Artist \$2,500 - \$4,999**

Boston Barber - Boston Celtics Shamrock Foundation, Inc. - Brookline Bank -  
Caffe Vittoria - Meghan & Neil Denenberg - Donan, Inc. - Enterprise Mobility -  
Filmark Hospitality Group - Florentine Caffe - Gee How Oak Tin Association of N.E. -  
Good Time Hospitality, LLC - Peter & Elizabeth Greene - Heart & Sole -  
Caroline & Andrew Lamb - Gary & Joanne Logie - Moretti Designs, LLC -  
Munroe Morrow Wealth Management - North End Athletic Association - North Street Grille -  
Mary O'Neill & Greg Krom - Bud & Margaret Ris - Lynn Roy - Lynne & Marc St. Andre -  
Tavern in the Square - Richard Vita

## **Director \$1,000 - \$2,499**

24 New Street Restaurant LLC - Ricky Antonellis - Carlo Basile -  
Biogen Foundation U.S. Employee Matching Gifts Program - Emily Borababy & Adam Einhorn -  
Boston Bottle - Charles Street Strategies, LLC. - Charlestown Mothers Association -  
Teresa Chuang & Craig Emrick - Committee to Elect Mayor Wu - Ann Conway & Ed Pearson -  
The Crampton Family - Figlia Di Macellai LLC - Kristin & Geoff Foley - Julia Forbes -  
Joanne Hayes-Rines - Marlene Kelly - Kelly & Associates - Christian Khoshatefeh -  
Knights of Columbus, Ausonia Council 1513 - Rose Koch & Brian Litofsky - Manulife -  
Barry Marshall - Margherite & Andy Matteis - Ed Miller & Allison Ramler - Bob Myslik -  
Michael Nichols - John & Tara Oh - Rita Pagliuca - John Romano Jr. -  
Rose Fitzgerald Kennedy Greenway Conservancy - Lino Rullo - Salumeria Italiana -  
Tall Ship Restaurant, LLC Operating - The Bowen-Flynn Family - The COOP -  
The Dogfather LLC - The Gilardi Group/Gibson Sotheby's Realty - Karen & Louis Tompros -  
UBS-Winn Wealth Management - Lidia Vitiello & Steven Santoro -  
Robin Wehbe & Leigh Ann Steele



# ANNUAL GIVING

## **Innovator - \$500 - \$999**

Francesca Caracappa - Jane & Jim Connolly - John Cremmen - Patricia & Dino DiFronzo -  
Caroline Driscoll & Bryan Barancik - Eagle Bank - Khurram Gillani - Loredana Griffith -  
MaryGaye Grizwin & Mike Sheehy - Teri Groome & Paul Belanger - Gabrielle & Matt Harvey -  
Robin & Paul Ketrot - Dana & John Kirby - Richard & Kathleen Koch - Angela Kuhnen -  
Carmela Laurella - Liberty Mutual Employee Match Program - Nate Lurie & Miriam Defilipp -  
Diana & Parke MacDowell - Cathy McDermott - Ann Milner - Samantha Montano -  
Maria Morales - Joyce & Guy Moss - Anne Occhipinti & Scott Haskell -  
Krista Olson & Aman Manchanda - Barb & Doug Peterlin and Family - Kitty & Tim Pinch -  
Catyn Piver - Jaime Racine - Row Republic - Marly & Peter Sandy-Roche - Sherri Snow -  
The Kim Family - Seth & Dina Weinroth - Robert White

## **Creator \$250 - \$499**

Adrian Madaro Election Committee - Ameriprise - Alyson Borzillo -  
Breckinridge Capital Advisors - Committee for Bob DeLeo - Committee to Elect James J. Oday -  
Committee to Elect Lydia Edwards - Committee to Elect Worrell -  
Commonwealth Counsel - Tchad Cort - Michelle Cunningham - Mark Cusack - Tom Fernandes -  
Timothy & Cynthia Finley - Richard & Penny Garver - Anthony Greco - Tracy Grossman -  
Haymarket Hotel - Gail & Matthew Hoffman - Diana Hwang - Kearney, Donovan & McGee LLC -  
Lisa & Greg LeBlanc - Nafisha LeBlanc - Amy Leydon & Brendan Daly - Loft & Vine -  
Massachusetts Biotechnology Council, Inc. - Brian Mazzoli - Rachel & Caleb McCann -  
Joy & Andy McDonald - Kathleen McGloin Tedesco - Jillian McGrath - Jennifer Mercadante -  
Lauren & John Meyer - North End Waterfront Health - Joanne & John O'Reilly - Chris Olson -  
Creelea & Tony Pangaro - Fran Pergola - Brian Pinch - John Pregmon - Project Paulie LLC -  
Karen & Daniel Puopolo - Kathleen Ray - Robyn Reed & Fred Cavalieri - Bob Ripley -  
Barbara & David Roberts - Dianne Royle - Patricia & Chris Sabbey - San Antonio di Padova -  
Paul Sapienza - Tara Shea & George Collins - Smith, Costello & Crawford -  
St Agrippina of Mineo Benefit Society - Ann Teixeira - Robert & Kelly Travaglini -  
Leslie & Theodore Wallus





# ANNUAL GIVING

## Advocate \$100 - \$249

Travis & Angela Allen - Deborah Allinson - Jason Aluia - Fawn Andersen - Nikki Andrews - Antonio Family - G. Arciero - Brian Ashe - Ann Babbitt - Richard Baker - Matthew Bamonte - Andres Barraza - Laura Benvenuto - Lee Berlik - Len & Laura Berlik - David Biele - Thomas Bonarrigo - James & Alexandra Bowers-Liu - BrightSphere Charitable Foundation Inc. - Victor Brogna - Liz Brooke - Cheryl Brooks - Ann Bushnell - Natalie Blais & J. Lucas Bussard - Laurie Cadigan - Daniel & Angela Cahill - Robert Carangelo - John A. Carey - Daniel Carey - Nancy & Michael Carufel - Davida Carvin - Simon & Francesca Cataldo - Anne Cederkvist - Jane Chu - Kristen & Manny Coelho - Councilor Gabriela Coletta - Monica & Bennett Collins Alper - Committee to Elect Carole Fiola - Committee to Elect Christine Barber - Committee to Elect Dan Ryan - Committee to Elect Frank Moran - Committee to Elect Jay Livingstone - Committee to Elect Joe McGonagle - Committee to Elect John Lawn - Committee to Elect Kate Lipper-Garabedian - Committee to Elect Kip A Diggs - Committee to Elect Meg Kilcoyne - Committee to Elect Michael Day - Committee to Elect Rob Consalvo - Committee to Elect Steven Ultrino - Committee to Elect Tommy Vitolo - Chris Cook - Jean Crawford - Claire Cronin - Donna D'Alessandro - Karen & John D'Amico - Daniel J. Hunt Committee #15721 - John DeMambro - Peter Dulac - Sandy Elsass - Sally & Anthony Fazzone - Adrian Federico - Ann-Margaret Ferrante - Michael Finn - Suzanne Fitzgerald - Jayme Fontana - David & Arlene Freed - Friends of Paul Donato - Friends of the North End - Jim & Francine Gannon - The Gavin Family - Anthony Gesualdi - Jessica Giannino - Shayne Gilbert - Maxine Goldberg - Eli Gramajo - James Hadley - Jennifer Harvey - Chuck & Cree Ann Henderson - Hubert Holley & Teresa Bello - Brenda Huggins - Edward Kane - Kate Hogan Election Committee - Priscilla Kauff - Bailey & DJ Kolapudi - Michael Kushmerek - Kathleen La Natra - Dacia & Rob Lamson - Margaret Luccarelli - Leslie Ludka Bell - Andrew Lynch - Jay Lynch - Nana & Opa MacDowell - Clarinda Massengill - Jennifer Matarazzo - Shirley McAllister - Ellen McDonald - Anne & Art McGivern - Kateri McGuinness - Jodie McMenamin - Kendall Miller - Teresa Mirabito - John Moran - William Moscarelli & Mary McBride - Tricia Muse & Jane Benjamin - Nazzaro Community Center - Erin Nicholls - North End Against Drugs - Isabel Pabon - Mary Beth Pearlberg & Ed Harlow - Alice & Thomas Peisch - Anthony & Kitty Pell - Maria Perrina - Philips Committee - Kathi-Anne Reinstein - Mary Rice - William Robertson - Xiaolan Ruan - Carlos Saez Rodriguez - Sarah Sands - Judy & Stan Schurgin - Shannon Smith & Jason Gousse - George & Rosanna Sogigian - Nancy Sposito - Harold Stahler - Melanie Stinnett - Emily Synk - Anne Tagliaferro - The Committee to Elect Danielle Gregoire - The Crocini Family - Karen & Jim Thompson - Stephen Tocco - Nancy Tompros - Reetu & Stavros Tsakalidis - UBS Employee Matching Gifts - Udi Urman - Amy & Jorge Van Zyl-Chavarro - Mathew & Kristin Vokey-Muratore - Christina & Michael Wiater - Tracey Wilkinson - Mary Zanor



# ANNUAL GIVING

## Friend \$25 - \$99

Stephanie Balsam - Alexander Bayer - Jennifer Bednar - Nancy Bellantoni - Claire Bench -  
Benton Locks - Charles Berlik - Dianne Binger - Justine Boonstra - Sean Brennan -  
Sheena Brooks - Jordan & Morgan Burke - Steven Burke - Michele Burke - Brandon Burke -  
Kristina Capiak - Margaret Cardone - Marcie Carmody - Ron Catudal - Christina Cavagnaro  
Aruna Chalasani - Kathleen & Thomas Childs - Ali Childs - Mihai Cotirta -  
Natalia Cotirta-Mocan - Christopher Cotton - Gail Courville - Diane Crawford -  
Donna Crawford - Jackie Criscuolo - Suzanne Curley - Laurie D'Elia -  
Kristen Daley Demerle - Mary Kate & Brian Daly - Emanuela De Musis -  
Hank & Louise Deshaies - Rosaria Dini - Nicki Downer - Lindsay Dreher - Michele Driscoll -  
Dan Drzymalski - Elizabeth Duclos-Orsello - Harriet Elbaum - Dana Elfenbein -  
Annie Ellenberger - Cliff Evans - Rashin Fahandaj - Omid Fallahazad -  
Rob Fautz & Joanne Bertolino - Pamela Feo - Victoria & Stefano Feo - Luisa Ferralis -  
Valerie Filiberto - Stephanie Finn - Jordan Fontana - Sarah & Paul Fullerton -  
Evangeline Galvez - Kenya Gilmore - Matthew Ginsburg - Deanne Glenn - Thomas Glenn III -  
Stephanie Goldberg - Abby Goldenfarb - Myra Grand - Jillian Grassetti -  
Jeffrey & Corrine Greene - Mario Guerra - Marilyn & Bruce Gunsch - Mary Guy - Carl Hall -  
Brittany Hampton - Rourke Harrington - Kerry Hawkins - Whitney & Chris Hayden -  
Shirley Henderson - Brandi Henderson - Lisa Herrington - Jonathan Herzfeld -  
Amy Hobgood - Diane Holmes - Victoria Ivashina - Ashley Jones - Stephanie Katsompenakis -  
Philip Katz - Ian Kea - Deena Kelly - Sabrina & Prem Khosla - June Kingsland -  
Kathryn Kirwin - Amanda Kukulski - Emily Lamb - Rob Lashway - Jeanne Lauer-Williams -  
Marcello Leo - Nicholas Leo - Katie Lever - Cynthia Lewis - Kathleen LiVolsi & Chris Laws -  
Pat & Marie Lynch - Coleen Lynch - Daniella Maney - Nick & Joanne Marziani - Nina Mazar -  
Samantha McCourt - Walter McDonald - Martha McGivern - Rishka Mehra -  
Alessandra & Claudio Midiri - Ruby & Max Millea - Dawn Miner - Frania Monarski -  
Enrique Mora - Morellato Family - Zara Morgan - Ovidiu-Emil Motroc - Cara Munnis -  
Dwight Neeley - Lisa Ng - Rosa Ng - Long Nguyen - Elianna & James Nuzum -  
Maryanne Nuzum - Trevor O'Brien - Theresa O'Neill - Christina Ohlinger - William Phillips -  
Sarah Pinch - Emily Pinch - Jennifer Pires - Kylie Plaut - Joe Poggenburg -  
Stacey Polishook - Susan Popp - Andrea Poulos - Barbara & Earl Raney - Bethany Rattigan -  
Jonathan Raukohl - Deborah Raukohl - Elizabeth Raukohl - Libbi Riccio - Heather Robinson -  
John & Patricia Romano - Bethany Rossi - Simone Routhier - Lori Routhier -  
Carmine Rullo - Lisa Rynne - Nancy Saragosa - Dan Scalia - Greg Scarmo -  
Harry Schoenbrun - Fran & Annette Shaw - Vanessa Shoaie - Nigel Simon - Molly Smith -  
Angie Smith - Carolyn Snow - Deepa Soni & Nirav Desai - Tiffany Spearman -  
Anthony Sposito - Mary Stokey - Elizabeth Sullivan - Christine Swider - Allison Taafe -  
Takeda Pharmaceuticals - Rosemary Tatarski - Howard Taub - Annmarie Thibodeau -  
Jacqueline Thong - Kay Tomas - Gary Tomas - Bruce Twomey - Phyllis Vitti - Tara Vuono -  
Erin Walker - Cynthia Warren - Susan Weaver - Adrienne Weisner -  
Chad & Nichola Wolfson - Allison & Justin Wolosz - Christina & Plamen Wright-Ivanova -  
Katie Yeckel - Kristin Zwickau



# IN-KIND GIFT FUND

Thank you to the generosity of the City of Boston, local businesses, and individuals who have supported NEMPAC through in-kind gifts that help benefit our annual fundraising, programs, and operations.

XV Beacon - ArtsEmerson - Babz Beads - Big Night Entertainment Group -  
Boch Center Wang Theatre - Boda Borg - Body Worlds Exhibition -  
Boston Bruins Foundation - Boston Duck Tours - Boston Festival Orchestra -  
Boston Lyric Opera - Boston Public Market Association -  
Boston Symphony Orchestra - Doug & Jen Bowen-Flynn - Celebrity Series of Boston  
- Coolidge Corner Theatre - Davio's Restaurant - Elizabeth Deane -  
DePasquale Ventures - Caroline Driscoll & Bryan Barancik - Encore Boston Harbor -  
Falcetti Pianos - FORMAT Barre & HIIT Studio - Nicholas Frattaroli -  
Boston Gay Men's Chorus - Grafton Group - Hotel Indigo -  
Institute of Contemporary Art Boston - Isabella Stewart Gardner Museum -  
Andrew Jankin - Joe Andruzzi Foundation - Loft & Vine - MiniLuxe - Robin Moody -  
Museum of Science - Metropolitan Opera - New England Aquarium - Pauli's -  
Puppet Showplace Theater - Redemption Strength & Conditioning - Regina Pizzeria  
- Prima Restaurant - Roche Bros. - Andrea Scott-Robson - Alex & Rumena Senchak -  
Shake the Tree - Sherri Snow - Soma Yoga Center - Sound Shapes Spa -  
Crystal Tang Tom Tarlow - Tavistock Restaurant Collection - TD Garden -  
The Juicery - Karen & Louis Tompros - Tony & Elaine's - TreeTop Adventures -  
Tresca - Cyanne Vasquez - Tara Vuono - Collin & Kayla Yip - Zoo New England





## PROFESSIONAL RELATIONS

Bruce Twomey | IT Consultant  
Emily Borababy | Bora Coaching  
Gary Bailey | Diversity Consultant  
In Your Court Marketing | Press Relations  
Kira Troilo | Art & Soul Equity, Diversity, Inclusion Consultant  
Robert Stone | CPA and Audit Firm  
Shaye Designs | Content Creator, Social Media Consultant  
Tevin Wooten, NBC | Event Emcee  
Torro Media | Website Development

## PERFORMANCE SPACE COLLABORATORS

The Rose Kennedy Greenway (Jazz in the Park)  
City Winery (Amore)  
Dante Alighieri Society of Massachusetts (Orfeo ed Euridice)  
Bijou de la Vida Gallery (private performance)

## COMMUNITY AND PARTNER ORGANIZATIONS

Art Pharmacy  
Boston Parks  
Boston Public Market  
Boston Public Library, North End and Charlestown Branches  
Boston Center for Youth & Families  
Boston Festival Orchestra  
Boston Music Project  
Charlestown High School  
Charlestown MovementLab  
Charlestown Working Theater  
Deloitte  
EdVestors - Bloomberg Arts Internships  
Mayor's Office of Special Events  
Mayor's Office of Arts & Culture  
Mayor's Office of LGBTQ+ Advancement  
Mayor's Office of Youth & Teen Engagement  
Nazzaro Center  
New England Conservatory Work Study Program  
North End Athletic Association  
North End Cares  
Nightingale Vocal Ensemble  
Rose Kennedy Greenway Conservancy  
Seven Hills Pasta Company  
The Esplanade Association



11

Facilities &  
Operating Sites  
across the North End,  
Charlestown, and  
Downtown Boston

100%

Renewed commitment  
to supporting a future  
Performing Arts Center  
in the existing Nazzaro  
Community Center,  
North End



#NEMPACBOSTON  
f @ NEMPACBOSTON  
NEMPACBOSTON.ORG

NEMPAC  
North End Music &  
Performing Arts Center



## FACILITIES

NEMPAC continues to operate facilities in both the North End and Charlestown, with occasional pop-up locations to support program needs. These include city-owned buildings we occupy in the North End at 50 Tileston Street, The Prado Studios, and 9 Hull Street, as well as rented spaces in Charlestown including the Charlestown Working Theater, Charlestown MovementLab and St. John's Church. NEMPAC remains committed to a future "home" and performance space in the Nazzaro Center, North End.



# BOARD OF DIRECTORS

Mary O'Neill, Chair  
Robin Wehbe, Vice Chair  
Tchad Cort, Clerk  
Caroline Twomey Lamb, Treasurer  
Doug Bowen-Flynn  
Teresa Chuang  
Ramin Khoshatefeh  
Rose Koch  
Clarinda Massengill  
Marly I. Roche Pabon  
John Romano, Jr.  
Alex Senchak  
Lynne St. Andre



# STAFF

Sherri Snow, Executive Director  
Allie Carufel, Educational Programs Director  
Pamela Feo, Development Manager  
Will Neely, Marketing & Communications Manager  
Mary-Alexandra Onstad, Private & Group Music Instruction Manager  
Kayla Tomas, Educational Programs Coordinator  
Stephen Allen, Facilities and Operations Coordinator  
Justine Boonstra, Development Associate  
Anja Voges, Development Associate  
Shaye Vasapolle, Social Media Content Creator & Graphic Designer  
Brenda Huggins, Opera Project Artistic Director  
Stefano Marchese, Jazz in the Park Artistic Director  
Christina Wright-Ivanova, Winter Concert Series Artistic Director  
Jack Mullin, Marketing Intern  
Sepehr Davallou, Development Intern  
Andrea Mesa, Finance Intern  
Sian Gordon, EdVestors Bloomberg Arts Intern  
Ashley Soriano, EdVestors Bloomberg Arts Intern



NEMPAC employed 51 high-quality instructors from various musical and artistic backgrounds. Many faculty have advanced degrees in their chosen field and work professionally as musicians and performers, and all have years of teaching experience under their belt. We were thrilled to also feature many of our faculty in Professional Performance and Outreach Events, including our first ever Faculty Cabaret.

## FACULTY

Blessing Agu  
Stephen Allen  
Sergio Arocha  
Michaela Barczak  
Schanaya Barrows  
Brooks Berg  
Amanda Boldt  
Justine Boonstra  
Elayna Broillet  
Amy Brown  
Laney Bunce  
Jack Byrne  
Allie Carufel  
Jaime Castellanos  
Anna Cipriani  
Kendra Comstock  
Laura DeGiacomo  
Emiel De Jaegher  
Melanie Donnelly  
Ava Dussault  
Emily Hardy  
Harriet Hung  
Joel Kayser  
Bailey Kolapudi  
Bethany Lynch  
Shawn Meehan  
Samantha Mirrer  
Matias Moar  
Rafael Moreno  
Vanessa Naghdi  
Rafael Natan  
Mary-Alexandra Onstad  
Bailey Peicott  
Lidia Pina  
Daniel Raney  
Laura Raty



*Faculty Musician Bailey Kolapudi at the Soirée*



# NEMPAC *Soirée* ANNUAL FUNDRAISER

Our 2023 Soirée was our biggest one yet, marking a fantastic start to our season with the NEMPAC community. In keeping with NEMPAC's growth, the scope of the Soirée was elevated to become our one major fundraiser of the year, with a tented stage, delicious buffet and bar, silent auction, Fund-a-Need paddle raise, and balloon pop raffle. With 254 guests in attendance, we raised \$120,000 from sponsorships, auction winners, and other donors to directly fund equitable arts programming for all. Thank you to all who attended and supported our Soirée— together we had a memorable night celebrating and setting the stage for a wonderful year!

A big thank you to our Soirée Sponsors: Abe & Louie's, Atlantic Fish Co., Joe's Waterfront, Seven Hills Pasta, Seal Tight Building Envelope Restoration, 90+ Cellars, Peak Event Services, Fresh Boston, Boston Bottle, Falcetti Pianos, Eastern Bank, Brookline Bank, Margaret & Bud Ris, Caroline & Andrew Lamb, Alex & Rumena Senchack, and Meghan & Neil Denenberg.







**Join Us:**

[nempacboston.org](http://nempacboston.org) | 857-239-9997 | @NEMPACBoston

NEMPAC Headquarters:  
50 Tileston Street | Boston, MA 02113  
Charlestown Location:  
442 Bunker Hill Street, Charlestown, MA 02129

